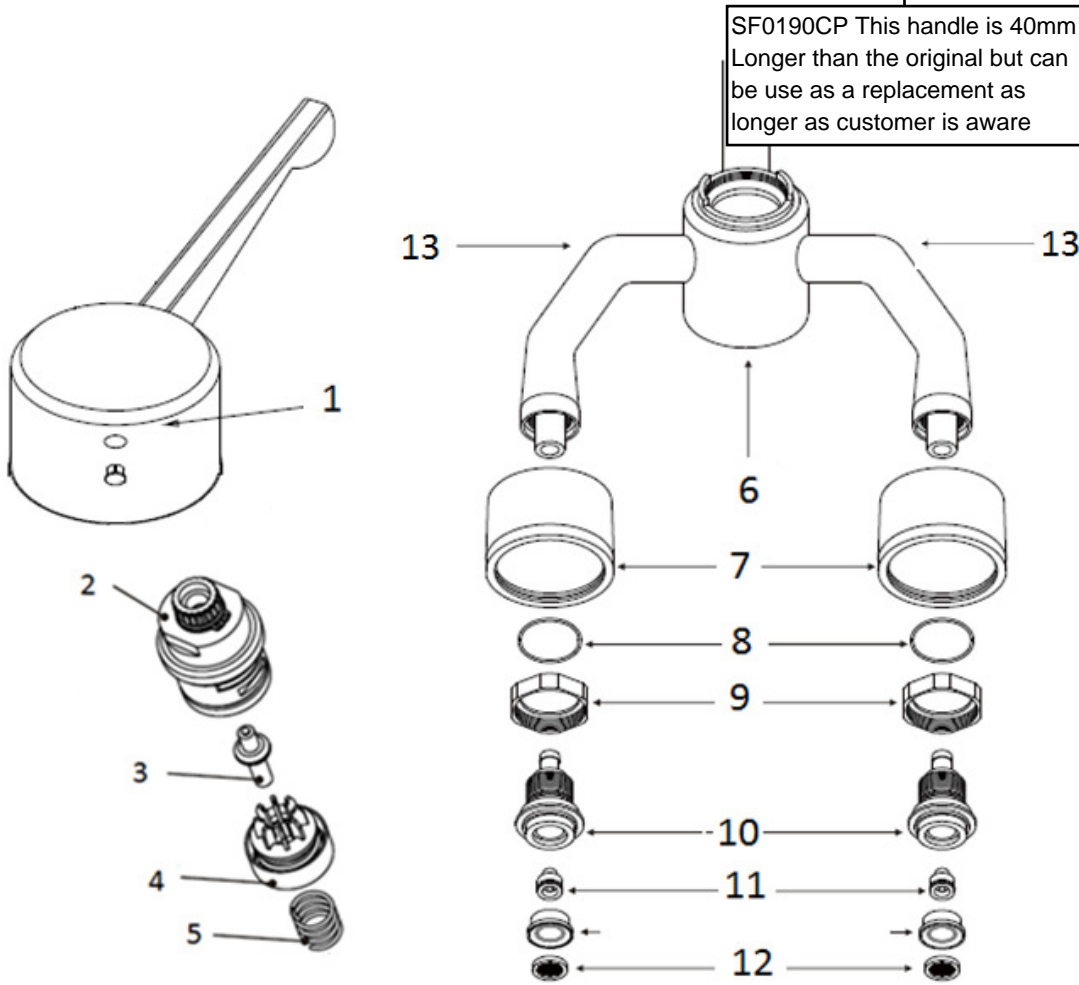




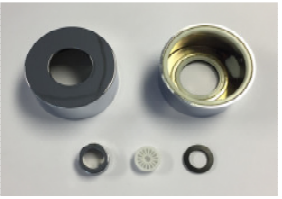


# Sola Thermostatic Wall/Deck Mounted Medical Tap



## surgeons thermostatic mixer

Wall mounted  
Deck mounted

**SF1056CP**  
**SF1057CP**

Thermostatic Medical Tap Components List				
Part No.	Description	Qty	Product No.	Image
1	Tap Head	1	SF1056CP, SF1057CP	Replacement Tap Required
2	Thermostatic Cartridge	1	SF0102XX	
3,4 & 5	Piston Assembly and Spring	1	SF0101XX	
6	Tap Body	1	SF1056CP, SF1057CP	Replacement Tap Required
7	Plastic Shroud and Flow Straightner	1	SF0103CP	
8,9,10,11 & 12	Seals, Grub Screws & Ancillary Pack	1	SF0104XX	
13	cold elbow assembly for SF1056CP only	1	SKH64-6	
	Hot elbow assembly for SF1056CP only	1	SKH64-7	